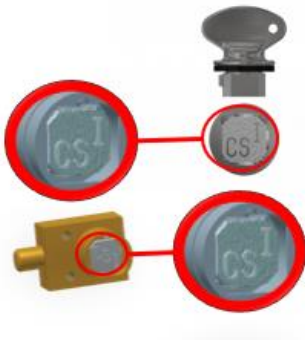




The Double Chock κ/KL is a wheel chock that prevents vans, trucks and trailers from moving during loading and unloading. In combination with the Salvo system, the gate or doc leveller is interlocked with the Chock. This ensures safeguard against accidental drive aways. Like all existing products in the Salvo range, the Double Chock κ/KL is based on Castell's proven key transfer interlocking.

## Bevor using

Make sure you have the key with the correct coding for the Double Chock κ/KL.



Check the positioning rollers for functionality. The construction of the Double Chock κ/KL should also be visually inspected for damage.



Test the settings of the Double Chock κ/KL as well as the mechanism of the locking lever.



## Application

The Double Chock κ/KL is a safety device to prevent accidental driving away. The Double Chock κ/KL ensures that the vehicle is secured in position. As part of the Salvo safety system, it ensures that the vehicle is secured before the gate is opened.

Insert the key into the locking module and turn it clockwise. The Double Chock κ/KL is now unlocked, and its width can be adjusted. Now attach it to a wheel on the driver's side.



If the Double Chock κ/KL is correctly installed, it loosely grips the wheel to be secured. Pull the locking lever upwards, the wedge moves together and must grip the wheel as tightly as possible.



The Double Chock κ/KL is correctly locked, the key can now be turned anti-clockwise and removed. When the key is turned, the Chock is locked in its setting.



## Precautions

The Double Chock κ/KL is suitable for the size and type of vehicle from 3.5 tonnes with a tyre diameter of 700 to 1070 mm. To avoid the risk of injury from manual handling, only move the chock using the mobility handle. Handle with care. Be aware of pinch points where the structure is pushed together/extended.

# Double Chock K/KL Manual

## Maintenance

Regular visual inspections should be carried out by the Site Manager/Safety Officer. Do not lubricate the lock cylinder with oil or grease, use CK Dry Powder Graphite if necessary.

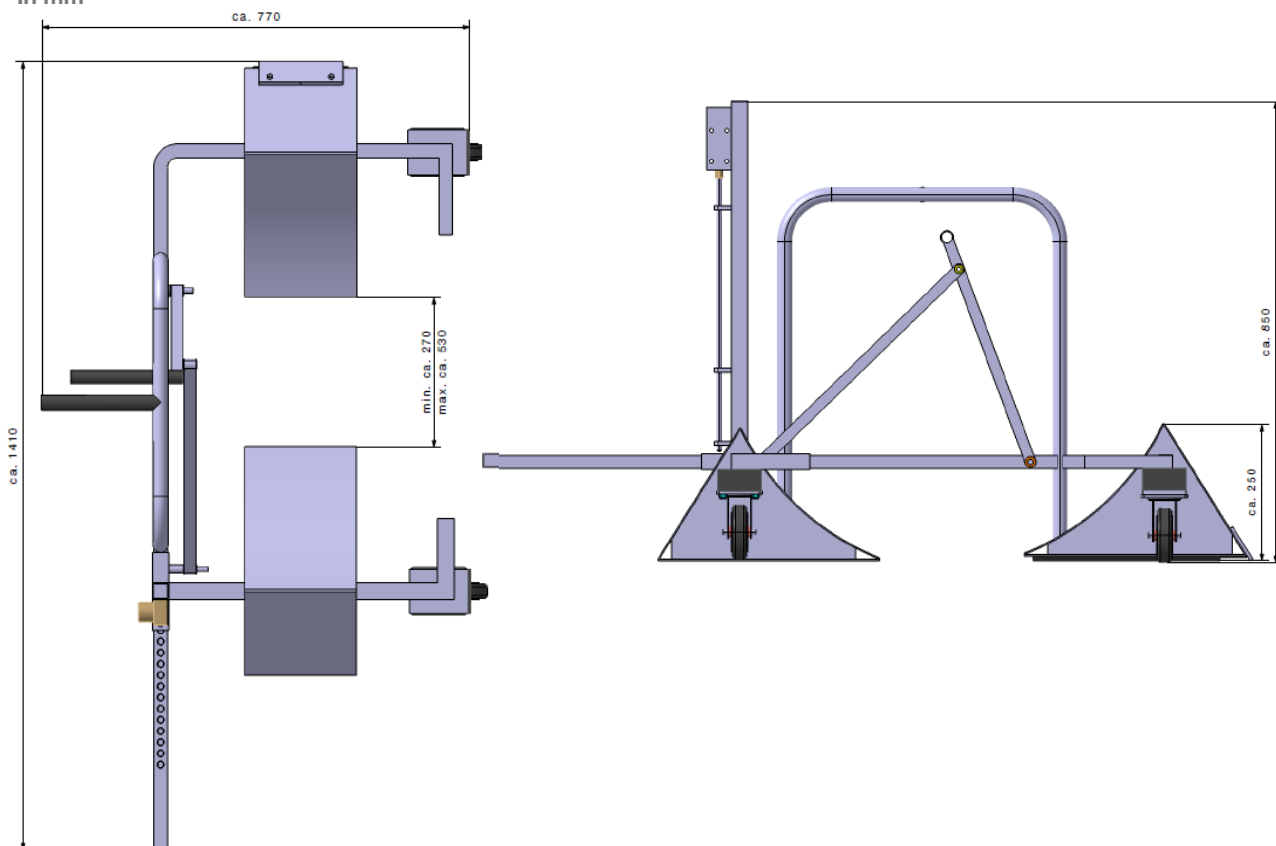
The recommended grease for lubricating sliding parts is Armna G4789 or equivalent.

## Technical data

|          |                  |
|----------|------------------|
| Material | Galvanized steel |
| Weight   | 27 Kg            |
| Colure   | Silber           |

## Zeichnung

Dimensions:  
In mm



Please specify the article number and coding when ordering.

(\*\* Mandatory information)

| Artikel number** | Symbol**    |
|------------------|-------------|
| DC               | -           |
| DC-K             | One Coding  |
| DC-KL            | Two Codings |